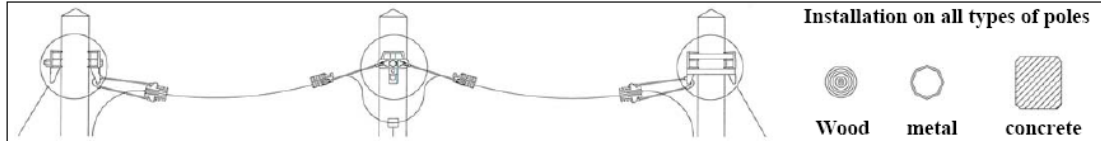


Univerzální držák na sloup UPB

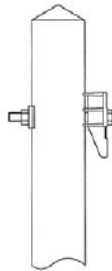
(pro dřevěné, kovové i betonové sloupy)



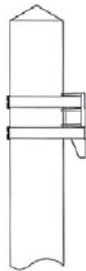
Description

The UPB bracket is manufactured from aluminium alloy with correspondingly high mechanical strength. Its unique patented design has been developed to propose a universal fitting covering all installation situations on wooden, metal or concrete poles :

- Suspension of running out rollers
- Stay systems
- Cross-arm installation
- Dead-ending of single, double or triple parallel lines.
- Dead-ending of several drop wires.
- Jointing points
- Angle points
- Derivation points



Installing with bolt



Installing with steel bands

Installation

With steel bands

The UPB bracket can be installed on any type of pole – drilled or undrilled – with two 20x0.7 mm stainless steel bands SB207 plus two buckles B20 (check our pole banding products). Usually allow two bands of one meter each per bracket.

With bolts

If the top of the pole is drilled (wooden poles, occasionally concrete poles) the UPB bracket can also be secured with a 14 or 16 mm bolt. The bolt length should be at least equal to the pole diameter + 50 mm (bracket thickness). Check our bolts.

Characteristics

Universal pole bracket UPB	
Installation	<ul style="list-style-type: none"> • With two 20 mm or 3/4 inch steel bands • With one 14 or 16 mm dia. Bolt
Max. working loads (Safety factor = 3)	<ul style="list-style-type: none"> • Dead-ending F1 500 daN – 1100 lbs • Dead-ending F2 300 daN – 650 lbs • Guying / stay F3 930 daN – 2050 lbs • Service lines F4 200 daN – 450 lbs • Angles F5 500 daN – 1100 lbs
Material	Aluminium alloy
Weight	0,2 kg - 0.44 lbs.
Packaging unit	30

